

Landscape Rationale

to be read in conjunction with the Landscape Drawings

Newtown, Drogheda

Ronan Mac Diarmada & Associates

Landscape Architects & Consultants



Context

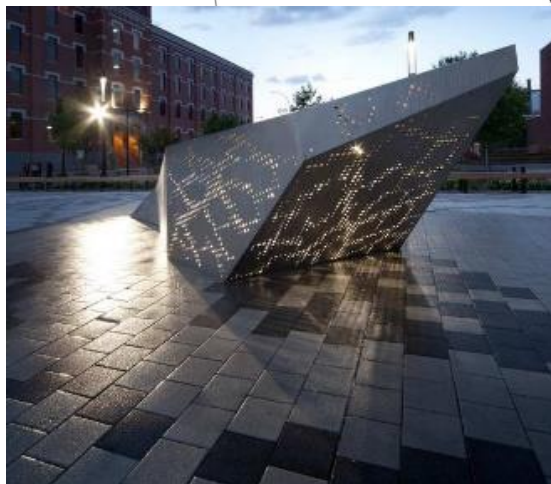


Ronan MacDiarmada + Associates Ltd.
Landscape Architects and Consultants

Landscape Masterplan

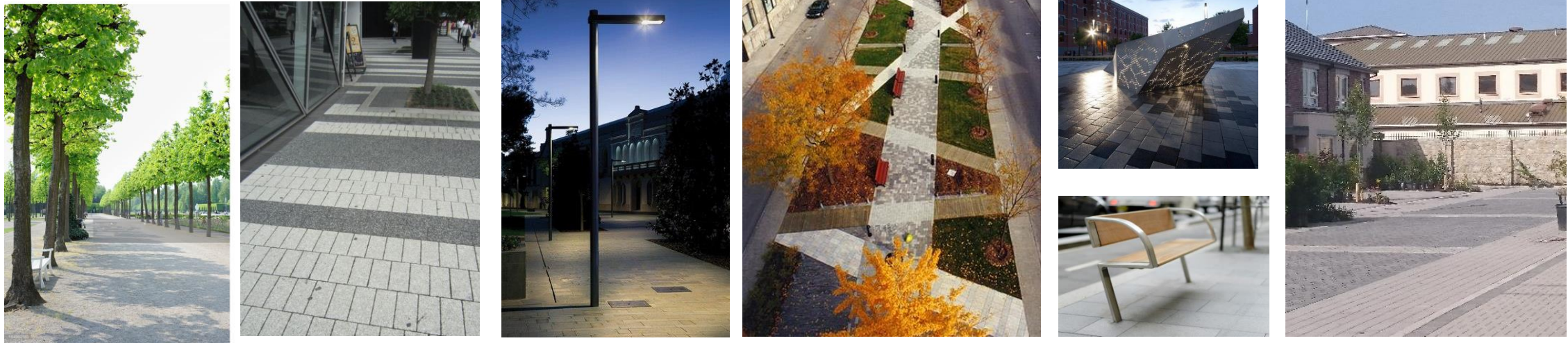
Quality Living Environment

- Sustainable Living Spaces .
- Integrate the Proposed Landscape with Existing hedgerows in landscape.
- Allow Residents to engage with nature by providing paths, seating in Open Spaces and extensive Landscape treatment to streetscape.



Roman MacDiarmada + Associates Ltd.
Landscape Architects and Consultants

LANDSCAPE - MOOD



Streetscape – Mood/proposed Materials








Open space

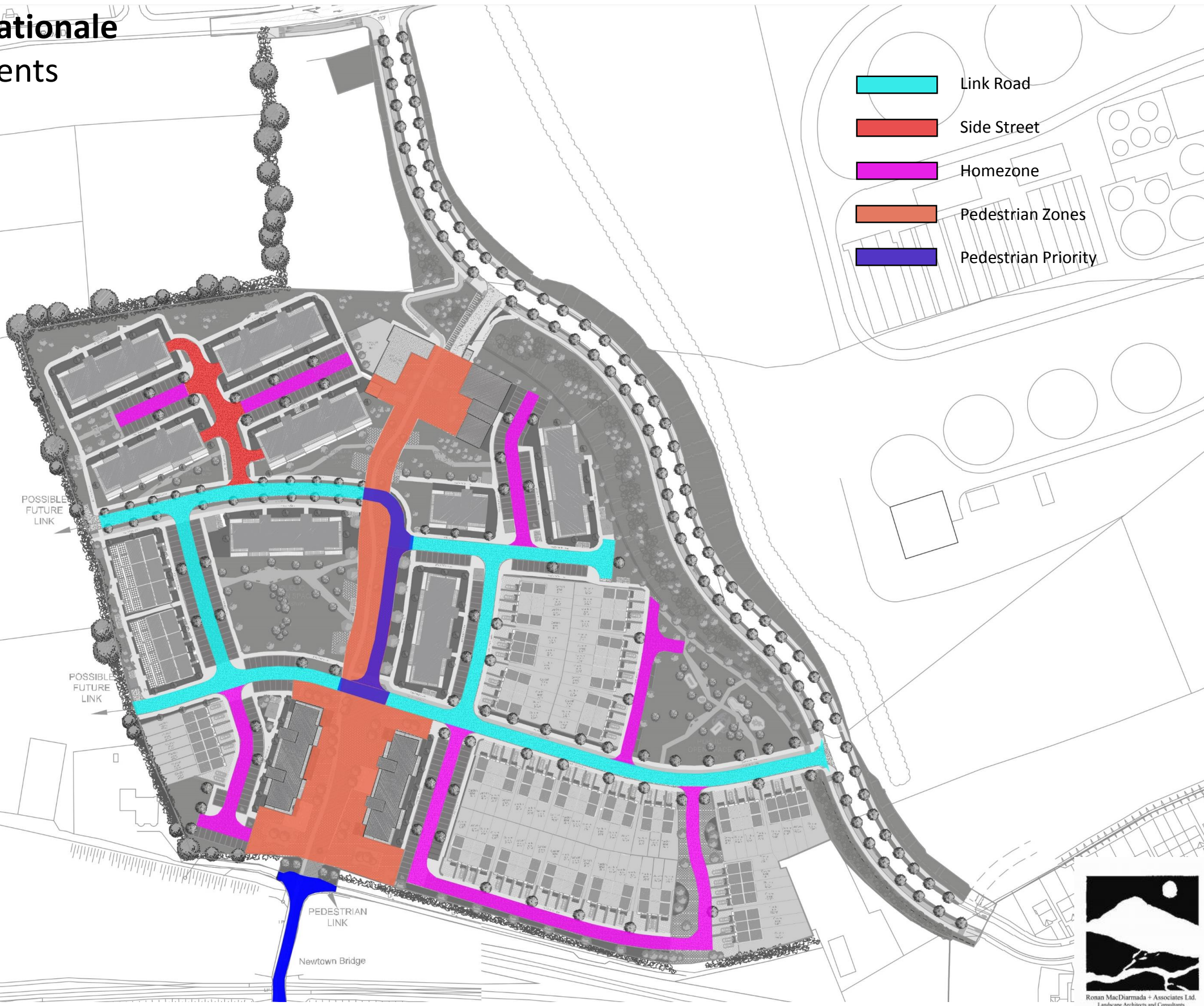


House treatments – Mood/proposed Materials

Landscape Rationale

Road Treatments

-  Link Road
-  Side Street
-  Homezone
-  Pedestrian Zones
-  Pedestrian Priority



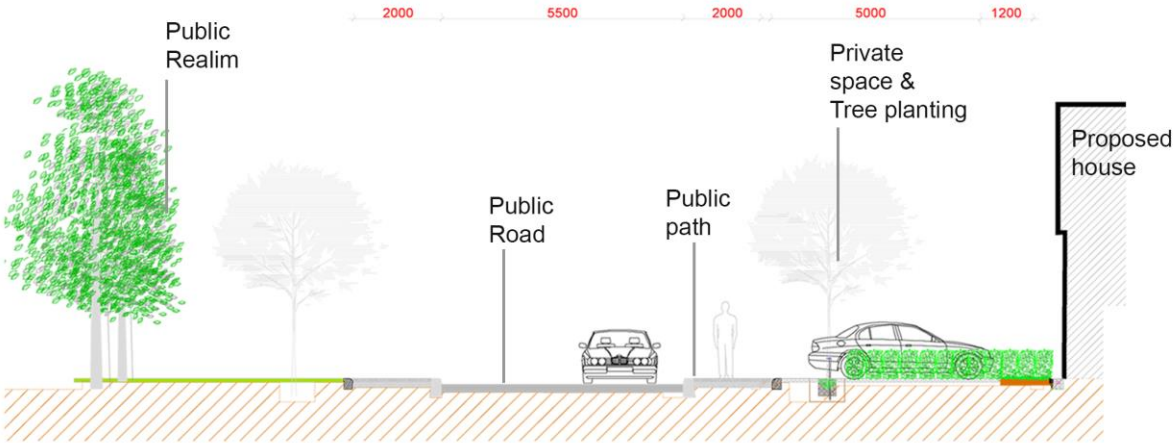
Landscape Rationale

Link Road



Type 1

- Public path
- Public Tree (open space side)
- Private Tree (house side)

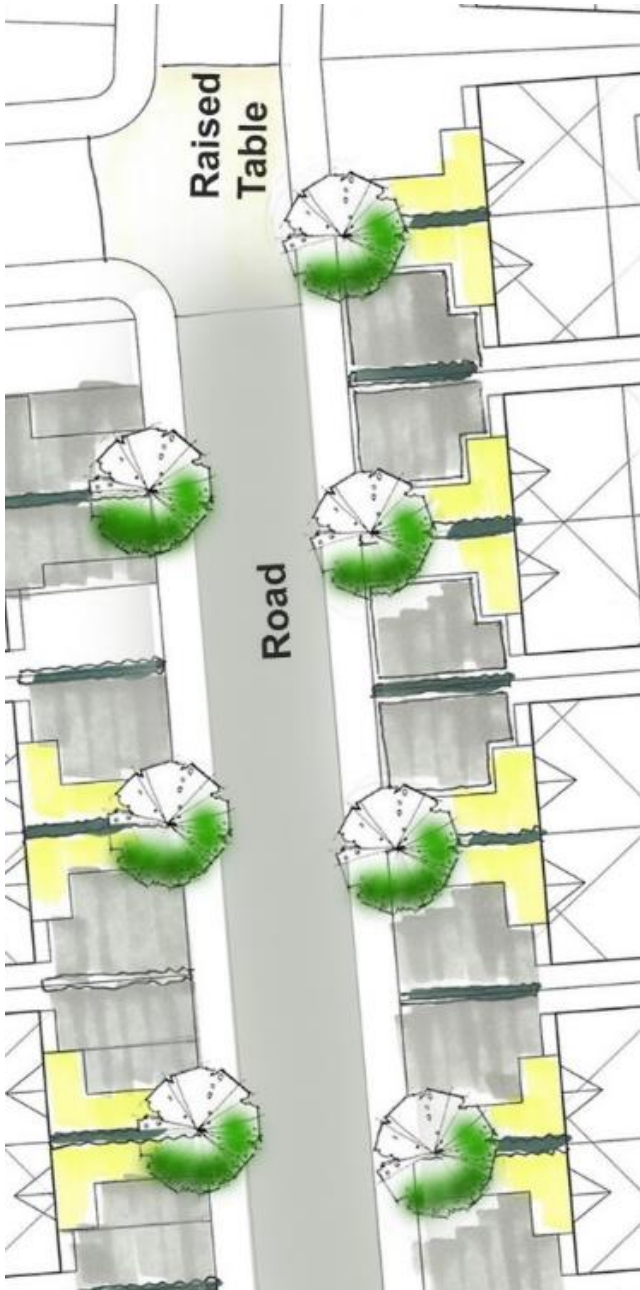


Landscape Rationale

Secondary Road 'Side Street'

Type 1

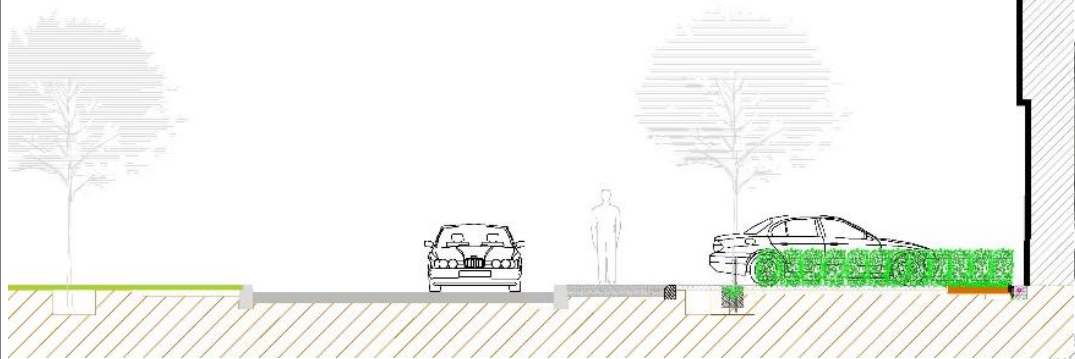
- Public path (on both sides of road)
- Public Tree (on both sides)



Landscape Rationale

Home zone

TYPE 1 – EXAMPLE OF ROAD

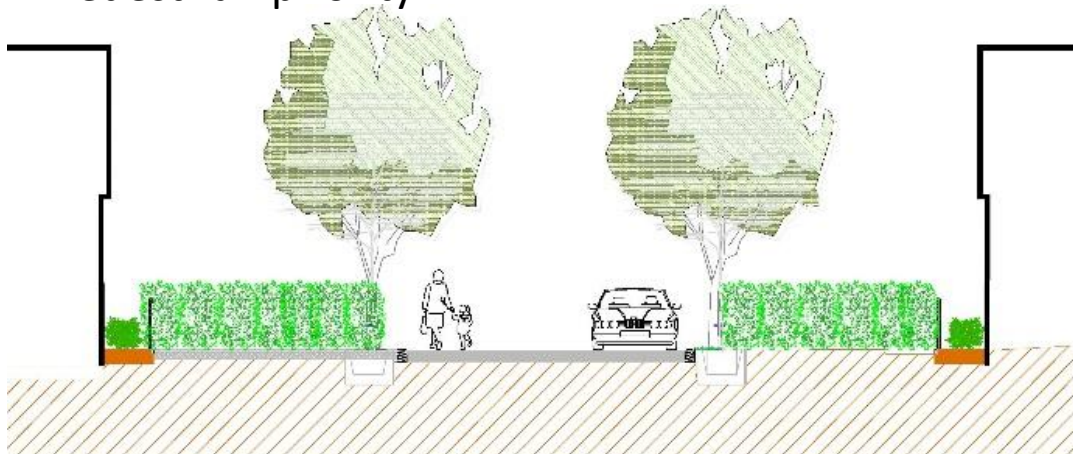


Type 1 A

- 1 Public path
- 1 Public Tree (open space)

Type 1B

- 1 Public path
- 1 Public Tree
- Coloured tarmac with stone chip
- Shared surface
- Pedestrian priority



Roman MacDiarmada + Associates Ltd.
Landscape Architects and Consultants

Landscape Rationale

Pedestrian Zone



The Pedestrian zone creates an urban edge within the scheme, it integrates the buildings with the hard landscaping which filters out into the surrounding pocket parks and courtyards.



Roman MacDiarmada + Associates Ltd.
Landscape Architects and Consultants

Landscape Rationale

Pedestrian Priority



Roman MacDiarmada + Associates Ltd.
Landscape Architects and Consultants

Landscape Rationale

Existing Hedgerows

Hedgerow 1. Southern Boundary

- Length: 194 m
- Classification: Hedge and trees species rich.
- Comments: Large field boundary. Predominantly Ash, Hawthorn, Elder, Bramble with some ornamental garden species.
- Development Impact: Reduce in width and retain.

Hedgerow 2. Western Boundary

- Length: 240 m
- Classification: Hedge and trees species rich.
- Comments: Large field boundary. Predominantly Ash, Hawthorn, Elder, Bramble with some ornamental garden species.
- Development Impact: Reduce in width and retain.

Hedgerow 3. North Western Boundary

- Length: 160 m
- Classification: Hedge and trees species rich.
- Comments: Large field boundary with large specimen trees of Beech, Sycamore and Ash.
- Development Impact: Reduce in width and retain.

Hedgerow 4. Centre Dividing Boundary

- Length: 310 m
- Classification: Hedge and trees species rich.
- Comments: Large field boundary. Predominantly Ash, Hawthorn, Elder, Bramble with some ornamental garden species.
- Development Impact: Remove

Hedgerow 5. Western Boundary

- Length: 100 m
- Classification: Hedge and trees species rich. Overgrown spreading into field area.
- Comments: Large field boundary. Predominantly Ash, Hawthorn, Elder, Bramble with some ornamental garden species.
- Development Impact: Remove



Hedgerow 6. Eastern Boundary

- Length: 250 m
- Classification: Hedge and trees species rich.
- Comments: Large field boundary. Predominantly Ash, Hawthorn, Elder, Bramble with some ornamental garden species.
- Development Impact: Retain where possible.

Tree Group 7. Tree Group

- Length: 180 m
- Classification: Hedge and trees species rich. Overgrown spreading into field area.
- Comments: Medium to Large trees. Predominantly Ash, Beech, Hawthorn, Elder, Bramble.
- Development Impact: Remove

Landscape Rationale

Green Routes

Green routes meander through this site in an organic and urban fashion. Users will experience many different spaces while progressing through the scheme on these routes. On the periphery of the site the routes are mainly organic in style like something you would experience rambling through the countryside. In contrast to that internally an urban plaza is located. This is a pedestrian friendly zone that creates the spine of the development. This will be where most of the activity and movement will take place with pedestrians and vehicles transitioning through it at different times of the day. A mixture of texture in both the hard and soft landscaping appeals to the senses of the user and makes the spaces more comfortable and welcoming to them.



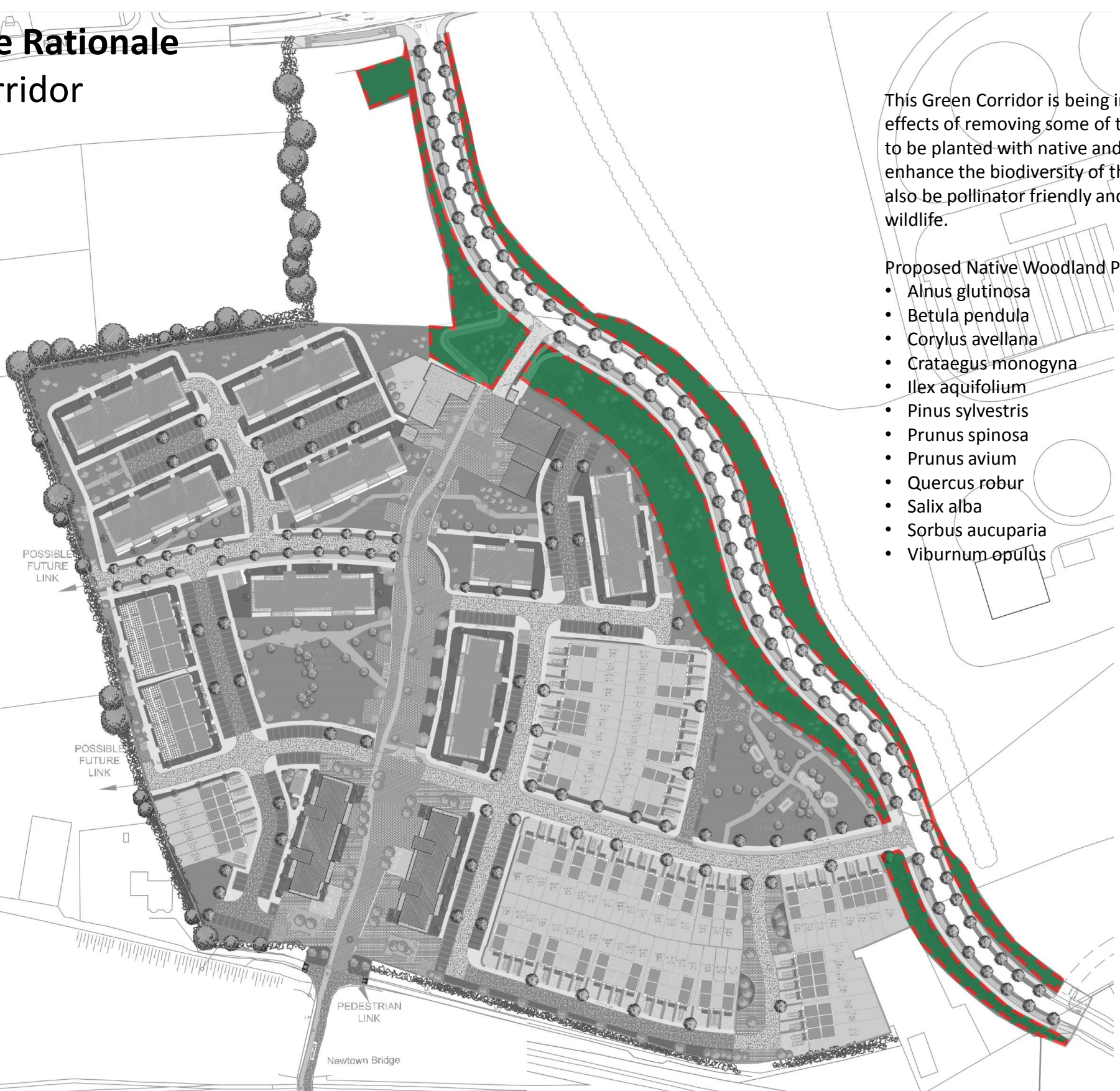
Landscape Rationale

Green Corridor

This Green Corridor is being implemented to offset the effects of removing some of the existing hedgerows. It is to be planted with native and naturalised species to enhance the biodiversity of the area. The planting will also be pollinator friendly and attract a variety of wildlife.

Proposed Native Woodland Planting Mix

- *Alnus glutinosa*
- *Betula pendula*
- *Corylus avellana*
- *Crataegus monogyna*
- *Ilex aquifolium*
- *Pinus sylvestris*
- *Prunus spinosa*
- *Prunus avium*
- *Quercus robur*
- *Salix alba*
- *Sorbus aucuparia*
- *Viburnum opulus*



Landscape Rationale

Green Open spaces

1. Natural Playground - 3,315m²
2. Central Green - 3,867m²
3. Neighbourhood Square - 3,390m²
4. Civic Plaza - 2,777m²
5. Communal Open Space - 2,556m²



Location of Natural Playground

Landscape Rationale

The Natural Playground



1 Embankment slide



2 Balancing beams



4 Stepping Logs



Seating



5 Sway Alley



3 Pick up Stick multi - use

Landscape Rationale

Central Green



Landscape Rationale

Neighbourhood Square



- ← Raised planter with tree planting
- ← Bike Storage
- ← Seating
- ← Cycle Route
- ← Rest area with seating
- ← Defensive Planting
- ← Public Art Piece
- ← Pedestrian Entrance



Recycled metal rushes



Bog Oak



Stainless Steel



Landscape Rationale

Civic Plaza

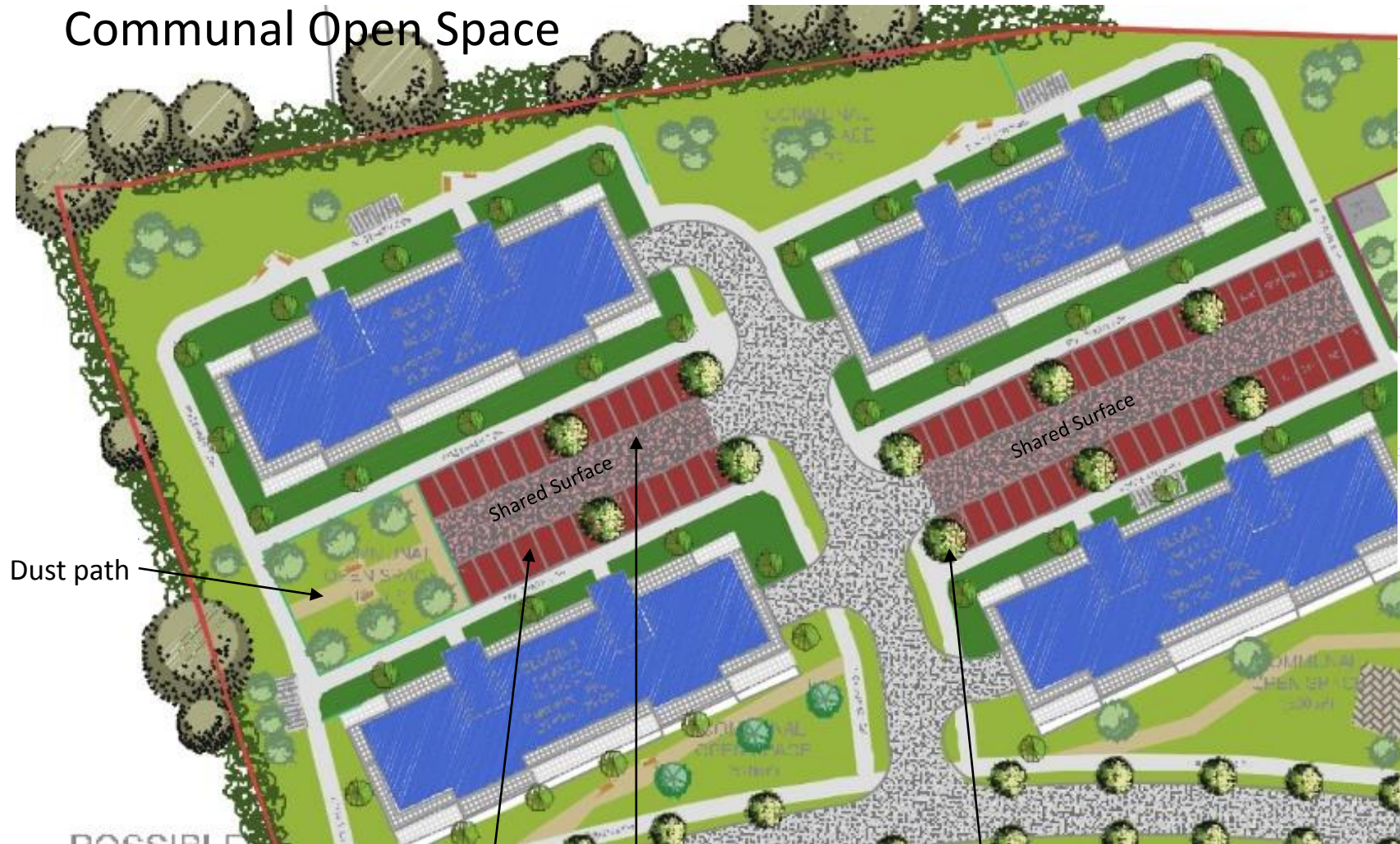


Paved or Resin bond Area with Seating



Landscape Rationale

Communal Open Space



Pollinator hedge



Permeable paving



Shared surface material
Tarmacadam Hot Rolled
with Red- Coated
Chippings

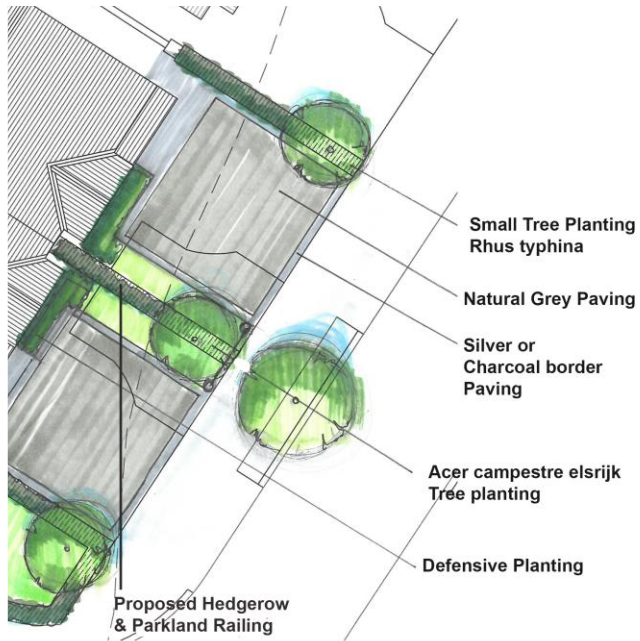


Prunus avium 'Plena'

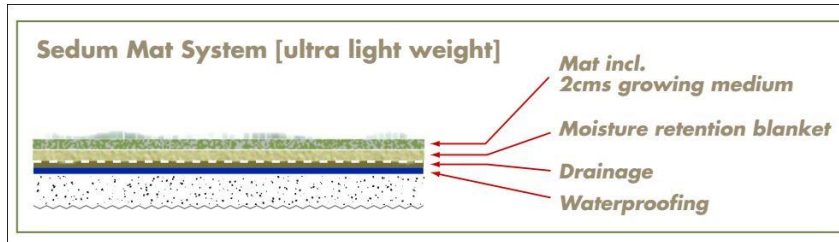
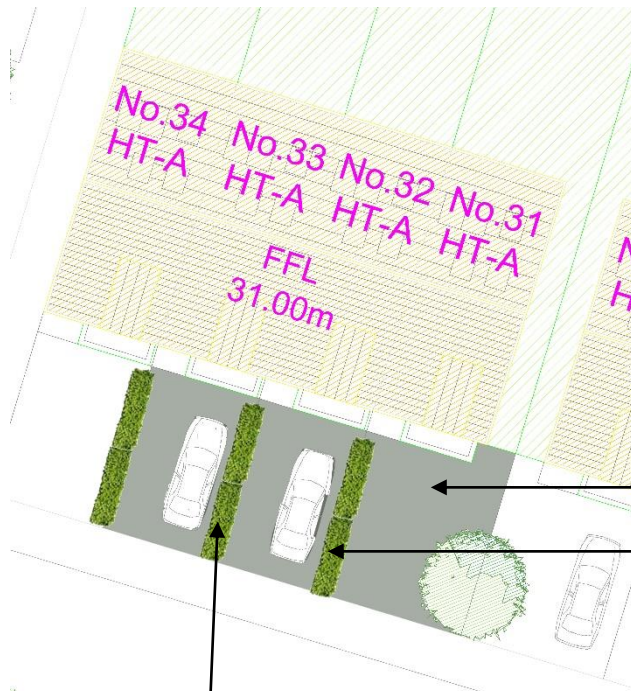


Landscape Rationale

Typical house fronts



Rustic or Grey
Permeable Paving 200 x 100 x 80mm
Stretcher Bond Pattern with 200mm Wide
Charcoal Soldier Course Border.



Bin storage



Roman MacDiarmada + Associates Ltd.
Landscape Architects and Consultants

Landscape Rationale

Apartment fronts



Rest area with seating

Feature paving
To entrance of
apartments

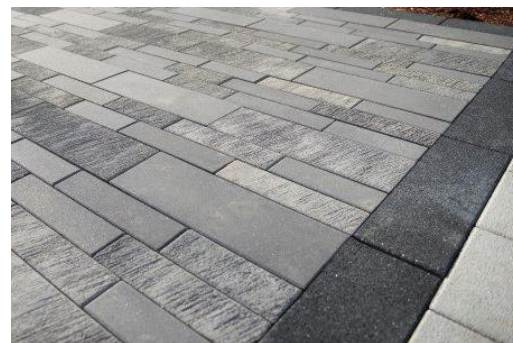
Defensive Planting



Rhus typhina



Communal Bin storage



Feature paving to entrance
of apartments



Ronan MacDiarmada + Associates Ltd.
Landscape Architects and Consultants

Landscape Rationale

Western Boundary Treatment



Communal Bin storage

Permeable paving

Seating

Bike Storage

New Tree Planting

Existing trees and hedgerow to be retained

Timber post & rail fence

Pedestrian Path



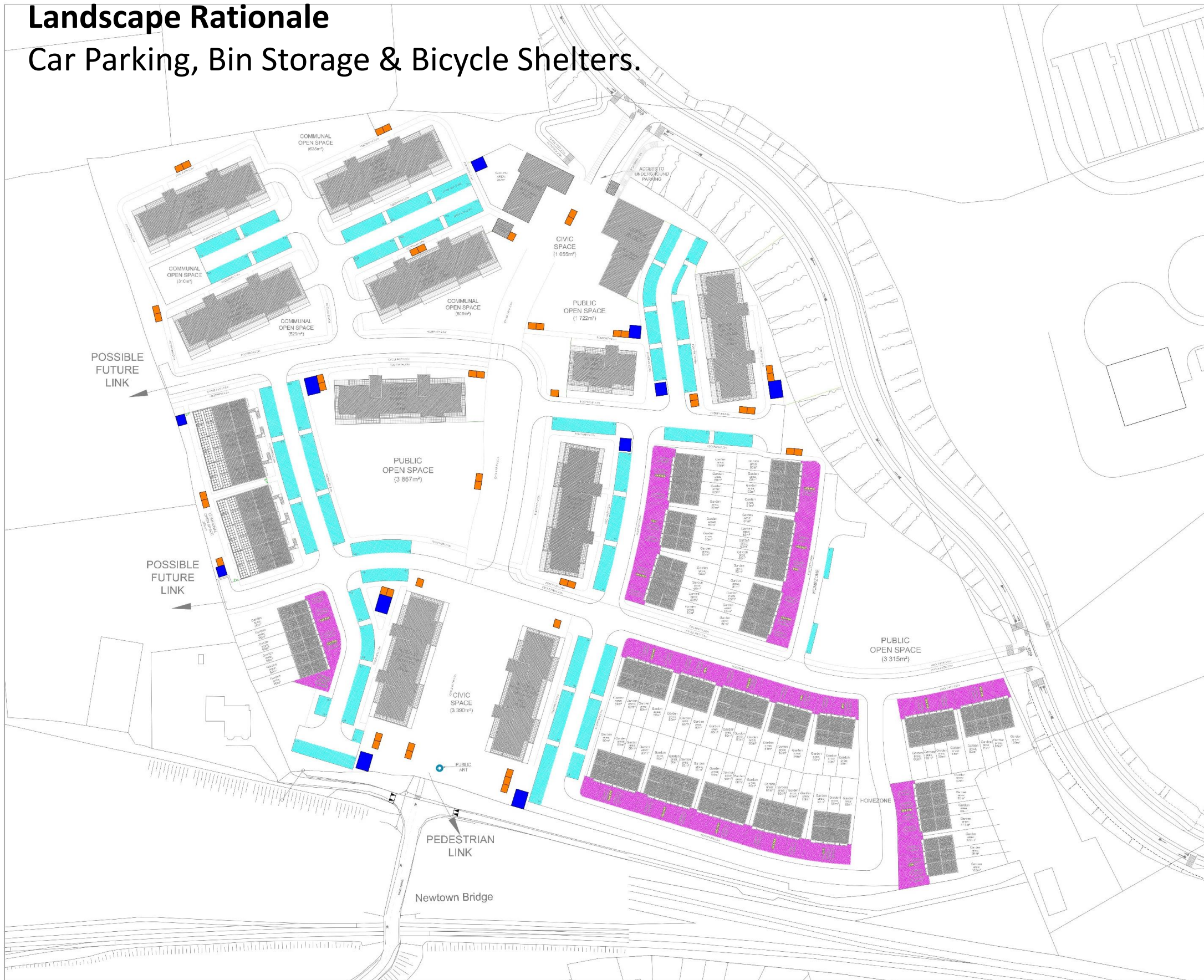
Timber post & rail fence








Ronan MacDiarmada + Associates Ltd.
Landscape Architects and Consultants

Landscape Rationale

Car Parking, Bin Storage & Bicycle Shelters.



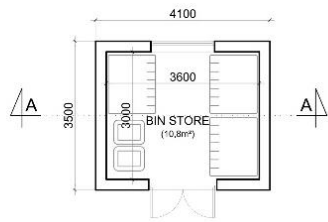
-  On Street Parking
204 no.
-  On Curtilage Parking
2 no. per dwelling
-  Bicycle Shelter
10 no. spaces per shelter
-  Communal Bin Storage
Duplex Units & Apartments
-  Bin Storage
Terrace Units - no outside access to back Gardens

Landscape Rationale

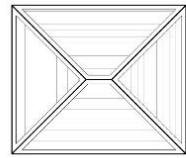
Proposed Bin Storage & Bicycle Shelters.

See architects dwg : PL-102_Newtown_Bin & Bicycle

BIN STORAGE - TYPE A



FLOOR PLAN



ROOF PLAN



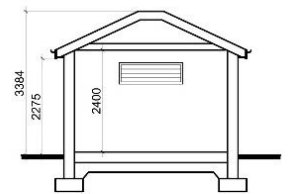
FRONT ELEVATION



REAR ELEVATION

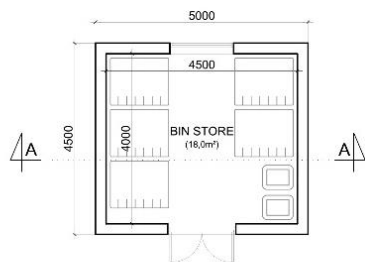


SIDE ELEVATION

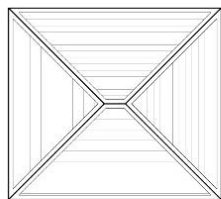


SECTION

BIN STORAGE - TYPE B



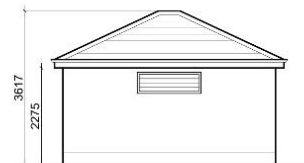
FLOOR PLAN



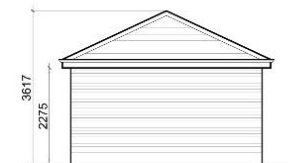
ROOF PLAN



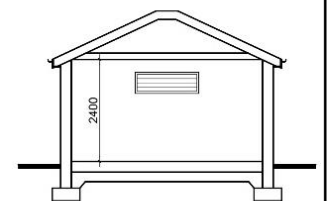
FRONT ELEVATION



REAR ELEVATION



SIDE ELEVATION



SECTION



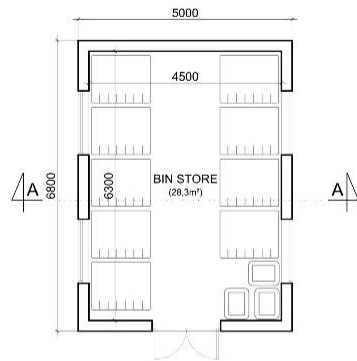
Ronan MacDiarmada + Associates Ltd.
Landscape Architects and Consultants

Landscape Rationale

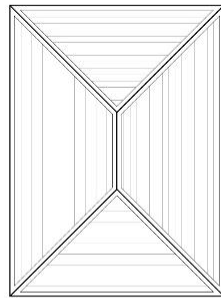
Proposed Bin Storage & Bicycle Shelters.

See architects dwg : PL-102_Newtown_Bin & Bicycle

BIN STORAGE - TYPE C



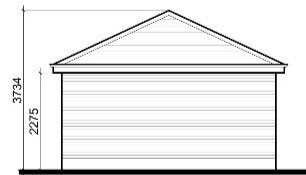
FLOOR PLAN



ROOF PLAN



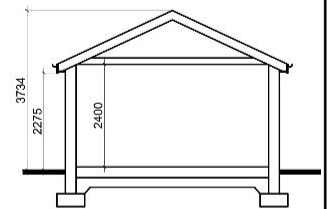
FRONT ELEVATION



REAR ELEVATION

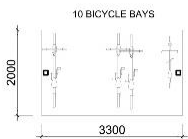


SIDE ELEVATION

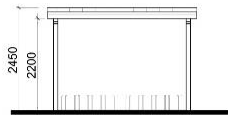


SECTION

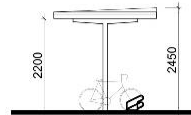
BICYCLE SHELTER



FLOOR PLAN



FRONT ELEVATION



SIDE ELEVATION

Landscape Rationale

Proposed Boundary Finishes



Concrete Post & Wooden Panel Fence



Parkland Railing & Hedge



Double Sided Treated Wooden Panel Fence With internal concrete post & Gravel Board



Suggested Dash & Brick Pier



Suggested Dash & Rendered Pier



Double Sided Treated Wooden Panel Fence to Boundary & Existing Hedge



Suggested Stone Feature walls



Landscape Rationale

Proposed Planting

Proposed Tree Planting

| No. | Name. | Size. |
|-----|--------------------------------|----------------------|
| T1 | Quercus rober 'Koster' | 18 - 20 cm |
| T2 | Acer campestre 'Elsrijk' | 16 - 18 cm |
| T3 | Tilia cordata 'Greenspire' | 16 - 18 cm |
| T4 | Malus 'John Downie' | 16 - 18 cm |
| T5 | Arbutus unedo | 150cm 50L |
| T6 | Pyrus calleryana 'Chanticleer' | 16 - 18 cm |
| T7 | Prunus serrulata 'Tai Haku' | 14 - 16 cm |
| T8 | Prunus avium 'Plena' | 16 - 18 cm |
| T9 | Sorbus acuparia | 16 - 18 cm |
| T10 | Viburnum opulus | 150cm 20L |
| T11 | Amelanchier lamarckii | 200cm 50L multi stem |
| T12 | Quercus petraea | 16 - 18 cm |
| T13 | Betula pendula | 350cm 3 stem min. |
| T14 | Laurus nobilis | 350cm 3 stem min. |
| T15 | Acer campestre 'Green column' | 18 - 20 cm |



Quercus robur 'Koster'



Tilia cordata 'Greenspire'



Betula pendula



Prunus serrula 'Tibetica'



Prunus avium 'Plena'



Malus 'John Downie'



Sorbus aucuparia



Viburnum opulus



Amelanchier lamarckii



Note: Planting shown throughout rationale are mature and are not indicative of size that shall be planted first.



Ronan MacDiarmada + Associates Ltd.
Landscape Architects and Consultants

Landscape Rationale

Proposed Planting

Proposed Ground Cover Planting

| No. | Name. | Size. |
|-----|--------------------------------|-------|
| S1 | Bergenia cordifolia | 1L |
| S2 | Persicaria affinis | 1L |
| S3 | Geranium 'Rozanne' (Jolly bee) | 1L |
| S4 | Hedera helix Hibernica | 1L |
| S5 | Salvia nemorosa | 1L |
| S6 | Helleborus niger | 1L |



Helleborus niger



Bergenia cordifolia



Sedum spectabile

Proposed Small Shrub Planting

| No. | Name. | Size. |
|-----|-------------------------|-------|
| S7 | Lavandula angustifolia | 3L |
| S8 | Erysimum 'Bowl's mauve' | 3L |
| S9 | Verbena grandiflora | 2L |



Verbena grandiflora



Perovskia atriplicifolia



Prunus laurocerasus

Proposed Medium Shrub Planting

| No. | Name. | Size. |
|-----|--------------------------|-------|
| S11 | Elaeagnus x ebbingei | 3L |
| S12 | Perovskia atriplicifolia | 3L |
| S13 | Prunus laurocerasus | 3L |



Elaeagnus x ebbingei



Hedera helix Hibernica



Lavandula angustifolia

Proposed Biophilic Planting

| No. | Name. | Size. |
|-----|-----------------------------------|-------|
| S14 | Achillea millefolium 'Red velvet' | 9cm |
| S15 | Nepeta faassenii | 9cm |
| S16 | Sedum spectabile | 9cm |
| S17 | Geranium sanguineum 'Elisabeth' | 9cm |



Note: Planting shown throughout rationale are mature and are not indicative of size that shall be planted first.



Roman MacDiarmada + Associates Ltd.
Landscape Architects and Consultants